



**REGIONAL SPECIALISED METEOROLOGICAL CENTRE-TROPICAL CYCLONES, NEW DELHI
SPECIAL TROPICAL WEATHER OUTLOOK**

DEMS-RSMC SPECIAL TROPICAL CYCLONES NEW DELHI DATED 19.06.2023

SPECIAL TROPICAL WEATHER OUTLOOK FOR NORTH INDIAN OCEAN (THE BAY OF BENGAL AND THE ARABIAN SEA) VALID FOR NEXT 120 HOURS ISSUED AT 0600 UTC OF 19.06.2023 BASED ON 0300 UTC OF 19.06.2023.

1. DEPRESSION (REMNANT OF CYCLONIC STORM 'BIPARJOY') WEAKENED INTO A WELL MARKED LOW PRESSURE AREA OVER CENTRAL PARTS OF NORTHEAST RAJASTHAN & NEIGHBOURHOOD

THE DEPRESSION (REMNANT OF CYCLONIC STORM 'BIPARJOY') OVER CENTRAL PARTS OF EAST RAJASTHAN MOVED NEARLY EASTWARDS AND WEAKENED AND LAY CENTERED AT 0300 UTC OF TODAY, THE 19TH JUNE AS A WELL MARKED LOW PRESSURE AREA OVER CENTRAL PARTS OF NORTHEAST RAJASTHAN AND NEIGHBOURHOOD.

IT IS VERY LIKELY TO CONTINUE TO MOVE NEARLY EAST-NORTHEASTWARDS AND WEAKEN FURTHER DURING NEXT 24 HOURS.

AS PER INSAT 3D IMAGERY, ASSOCIATED SCATTERED BROKEN LOW/MEDIUM CLOUDS WITH EMBEDDED MODERATE TO INTENSE CONVECTION LAY OVER EAST RAJASTHAN AND NORTHWEST MADHYA PRADESH. MINIMUM CLOUD TOP TEMPERATURE IS MINUS 70°C. BROKEN LOW/MEDIUM CLOUDS WITH EMBEDDED WEAK TO MODERATE CONVECTION LAY OVER SOUTH HARYANA AND ADJOINING DELHI AND WEST UTTAR PRADESH.

THIS IS LAST UPDATE IN ASSOCIATION WITH THIS SYTEM.

1. BAY OF BENGAL:

SCATTERED LOW AND MEDIUM CLOUDS WITH EMBEDDED INTENSE TO VERY INTENSE CONVECTION LAY OVER WESTCENTRAL BAY OF BENGAL OFF NORTH ANDHRA PRADESH COAST AND NORTH ANDAMAN SEA. SCATTERED LOW AND MEDIUM CLOUDS WITH EMBEDDED MODERATE TO INTENSE CONVECTION LAY OVER REST PARTS OF SOUTH BAY OF BENGAL, SOUTH ANDAMAN SEA, ARAKAN COAST AND GULF OF MARTABAN.

PROBABILITY OF CYCLOGENESIS (FORMATION OF DEPRESSION) DURING NEXT 120 HRS:

24 HOURS	24-48 HOURS	48-72 HOURS	72-96 HOURS	96-120 HOURS
NIL	NIL	NIL	NIL	NIL

2. ARABIAN SEA:

SCATTERED LOW AND MEDIUM CLOUDS WITH EMBEDDED INTENSE TO VERY INTENSE CONVECTION LAY OVER LAKSHADWEEP ISLANDS. SCATTERED LOW AND MEDIUM CLOUDS WITH EMBEDDED MODERATE TO INTENSE CONVECTION LAY OVER EASTCENTRAL ARABIAN SEA OFF KARNATAKA COAST, SOUTHEAST ARABIAN SEA AND COMORIN AREA. SCATTERED LOW AND MEDIUM CLOUDS WITH EMBEDDED WEAK CONVECTION LAY OVER NORTH ARABIAN SEA AND REST PARTS OF EASTCENTRAL ARABIAN SEA.

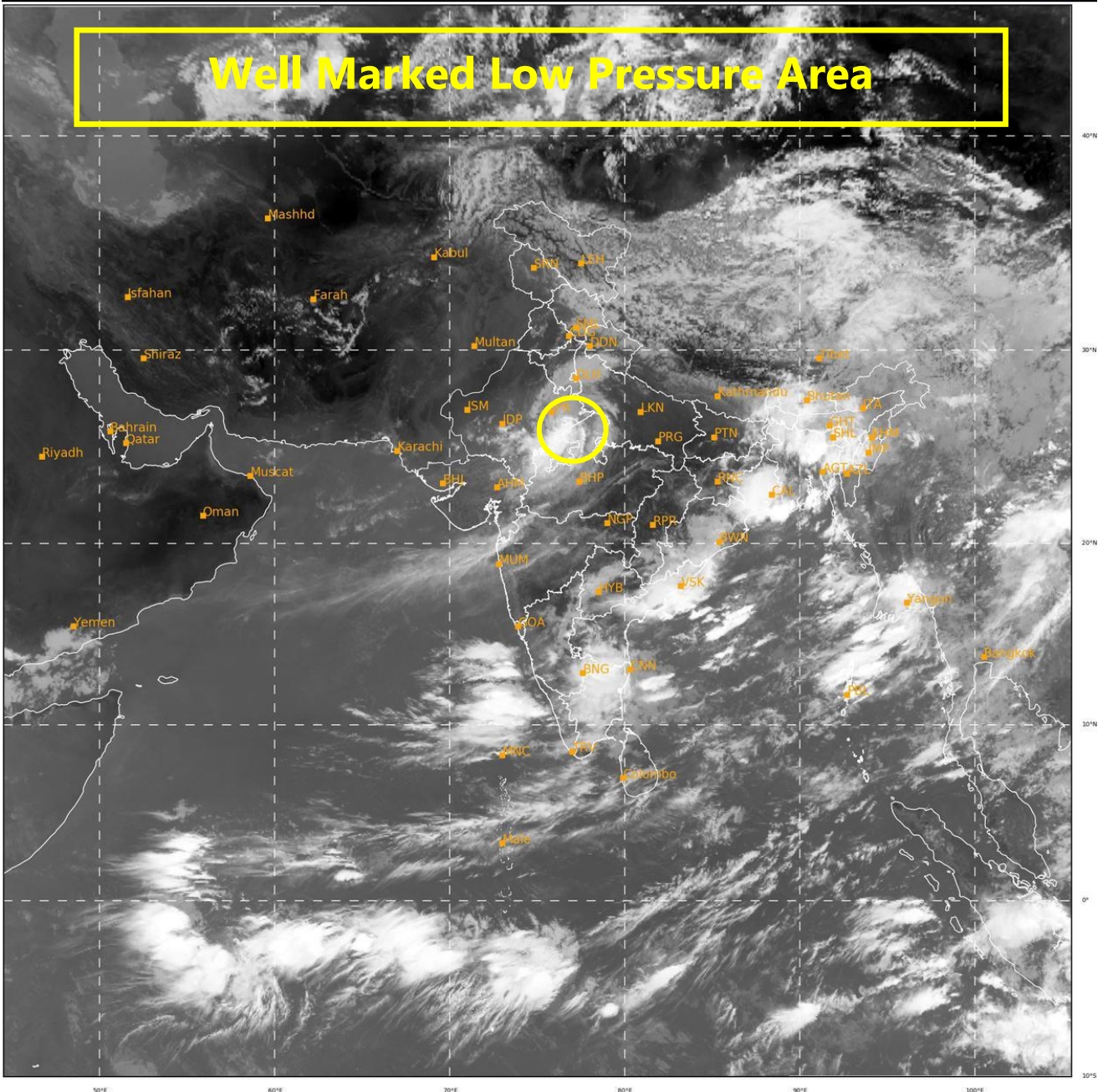
PROBABILITY OF CYCLOGENESIS (FORMATION OF DEPRESSION) DURING NEXT 120 HRS:

24 HOURS	24-48 HOURS	48-72 HOURS	72-96 HOURS	96-120 HOURS
NIL	NIL	NIL	NIL	NIL

M. SHARMA
SCIENTIST-D
RSMC DELHI



Well Marked Low Pressure Area



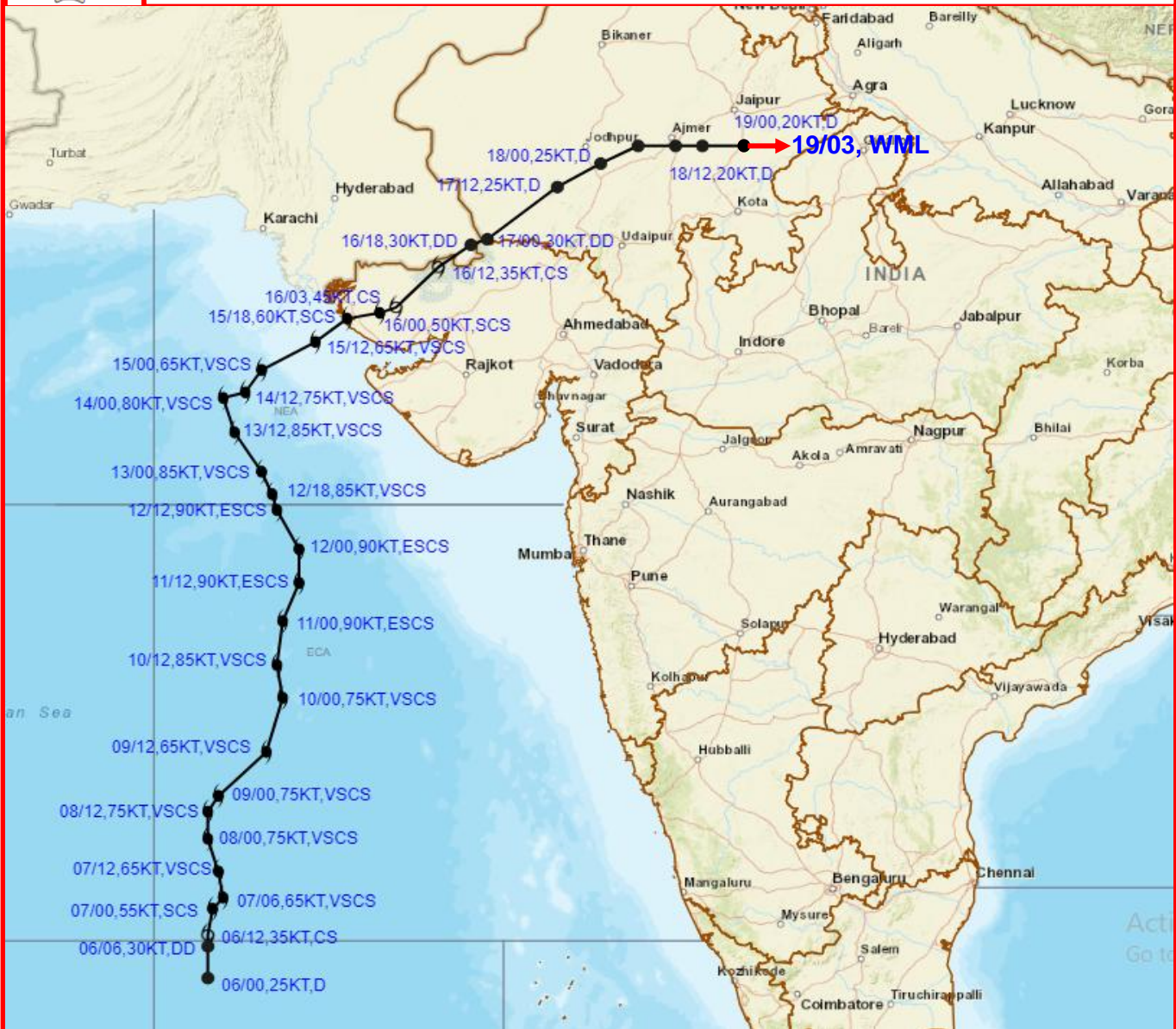
279

916

IMD,DELHI



OBSERVED TRACK OF EXTREMELY SEVERE CYCLONIC STORM BIPARJOY OVER ARABIAN SEA FOR THE PERIOD OF 06TH TO 19TH JUNE 2023.



DATE/TIME IN UTC
IST=UTC + 0530
L: LOW PRESSURE AREA
WML: WELL MARKED LOW PRESSURE AREA
D: DEPRESSION (17-27 KT)
DD: DEEP DEPRESSION (28-33 KT)
CS: CYCLONIC STORM (34-47 KT)
SCS: SEVERE CYCLONIC STORM (48-63KT)
VSCS: VERY SEVERE CYCLONIC STORM (64-89 KT)
ESCS: EXTREMELY SEVERE CYCLONIC STORM (90-119 KT)
SuCS: SUPER CYCLONIC STORM (\geq 120 KT)

- LESS THAN 34 KT
- 34-47 KT
- \geq 48 KT
- OBSERVED TRACK
- FORECAST TRACK
- CONE OF UNCERTAINTY